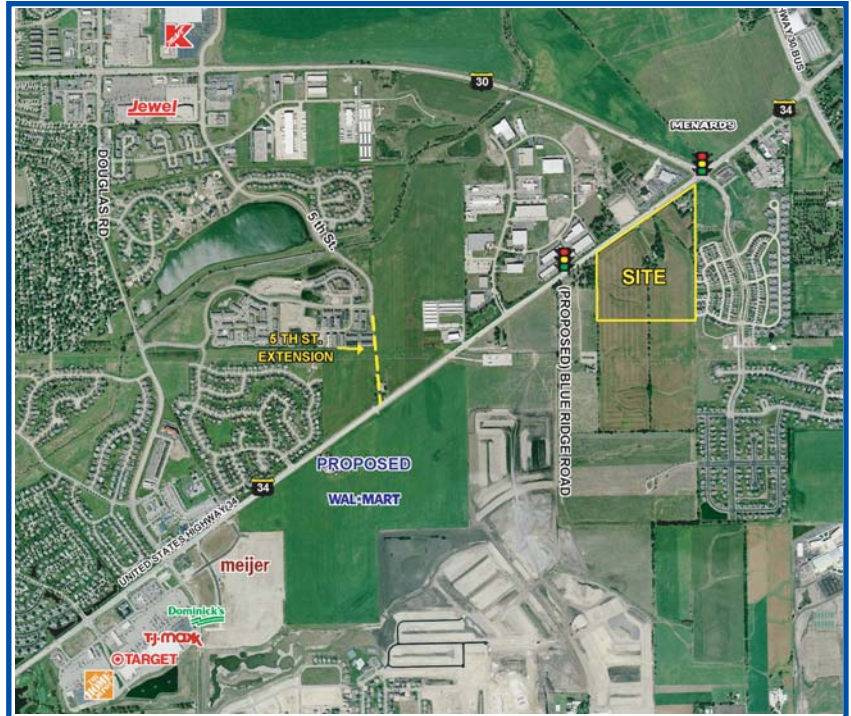


Proposed Retail Development

Oswego, Illinois

Developed By:



Demographics:
2005 Estimate

Population:

1 Mile 3,591
3 Mile 82,117
5 Mile 197,155

Average Household Income:

1 Mile \$92,715
3 Mile \$85,166
5 Mile \$88,819

Location: SWQ of Route 34 & Route 30
Oswego, Illinois

Size: 44 Acres

Total GLA: +/- 300,000 sf +outlots

Traffic Counts: Route 30 - 21,600 cars
Route 34 - 19,700 cars

Trade Area: This proposed retail development is one of the fastest growing residential communities in the Chicagoland community. and Kendall County is one of the fastest growing counties in the nation. It is located on the Route 34 corridor featuring major retailers such as Target, Home Depot, Dominick's, T.J. Maxx, a proposed Meijer, Menards, and Wal-Mart.

For More Information Contact:

Gary Greenfield
ggreenfield@metrocre.com
Alex Mitrovic
amitrovic@metrocre.com
847-412-9898

3340 Dundee Road
Suite 201
Northbrook, IL 60062



847-412-9898
847-412-0101 fax
www.metrocre.com

Proposed Retail Development Oswego, Illinois



**For More Information
Contact:**

Gary Greenfield
ggreenfield@metrocre.com
Alex Mitrovic
amitrovic@metrocre.com
847-412-9898

3340 Dundee Road
Suite 2C1
Northbrook, IL 60062



847-412-9898
847-412-0101 fax
www.metrocre.com